



**Produce!**  
**Publish!**  
**Period!**

Danware Data A/S  
Bregnerodvej 127  
3460 Birkerød  
Denmark  
Tel.: +45 45 90 25 25  
Fax.: +45 45 90 25 26  
[www.danware.com](http://www.danware.com)

NetOp<sup>®</sup> and the red kite are registered trademarks of Danware Data A/S. All other products mentioned in this document are trademarks of their respective manufactures. Danware Data A/S denies any and all responsibility for damages caused directly or indirectly as a result of using this document. The content of this document is subject to change without notice.

## Abstract

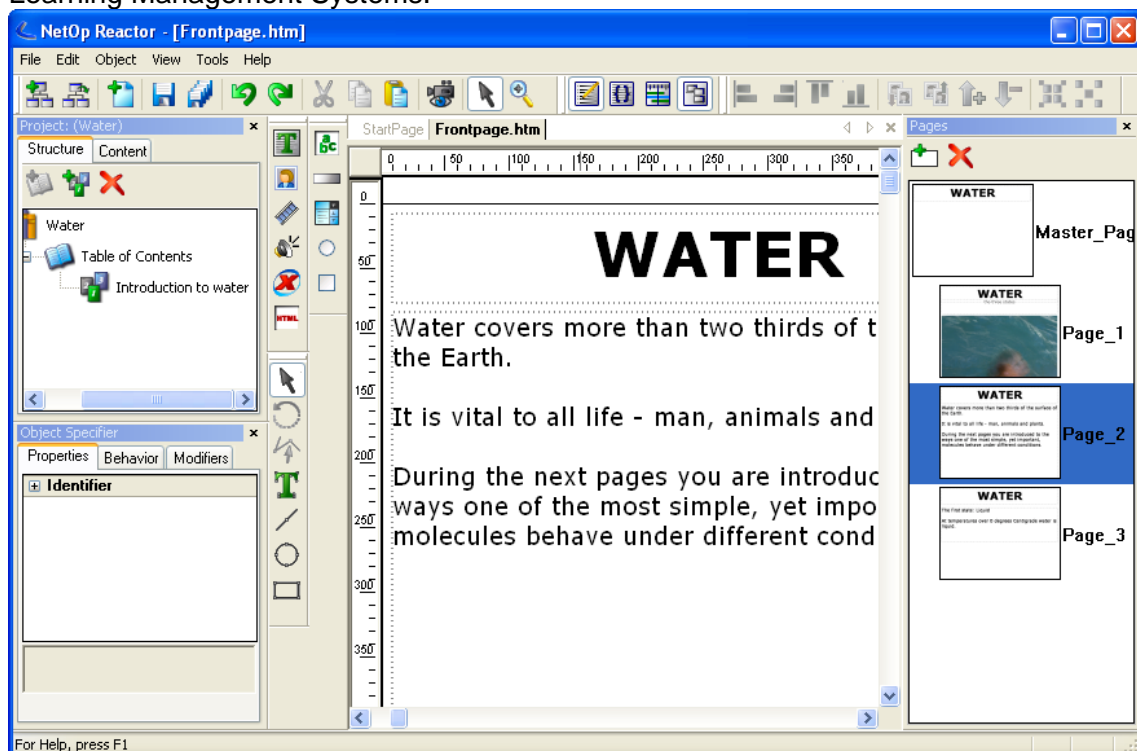
Instant, easy and constant access to updated information is becoming an expectation for the workforce as well as for management. Animations, text, tests and images – the challenge is to tie the different media types together to create a single, easy accessible source of updated and appetizing information. This whitepaper describes a solution that will do just this.

## Solution

NetOp<sup>®</sup> Reactor offers a professional content creation tool for the e-learning industry, offering end-to-end authoring and distribution with a full range of powerful features that enable you to efficiently produce rich interactive e-learning on any scale from Small Business to Enterprise.

The e-learning industry is understood as anyone that needs to create and publish online content – corporations for training of employees, publishers of learning material, educational authorities for curriculum material, etc.

No matter which strategy is used, it is obvious that the software involved for building the training material, must support easy exchange of learning modules, i.e. support open standards, and must meet the demands for integration into a wide variety of Learning Management Systems.



The NetOp Reactor workspace. The most used functions and views

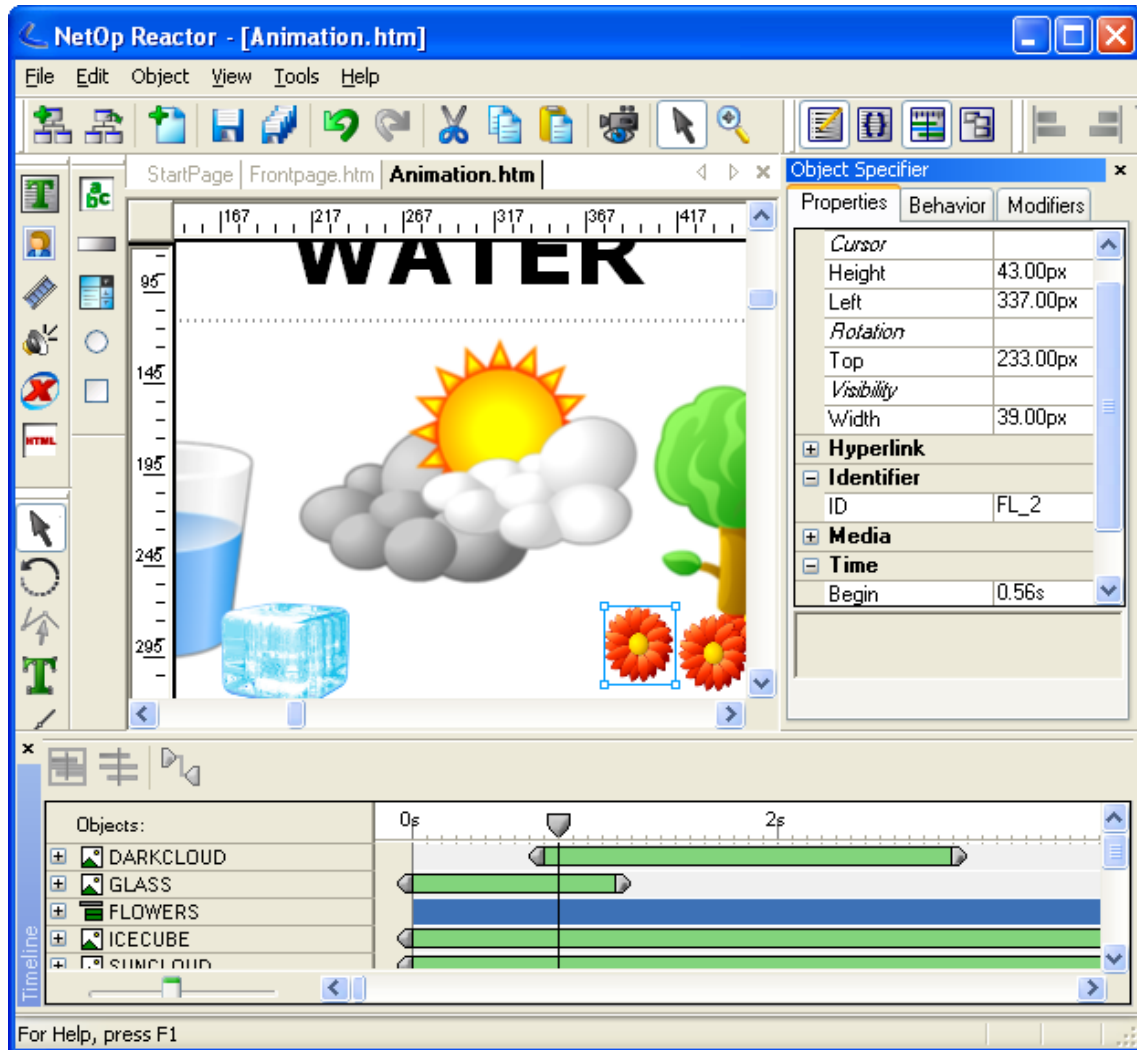
NetOp<sup>®</sup> and the red kite are registered trademarks of Danware Data A/S. All other products mentioned in this document are trademarks of their respective manufacturers. Danware Data A/S denies any and all responsibility for damages caused directly or indirectly as a result of using this document. The content of this document is subject to change without notice.

## Example

A provider of training programmes who wants to distribute e-learning faces one imminent problem – apart from creating the content – how can the course participant access the course?

NetOp® Reactor creates all content in SCORM packages which enables easy distribution via standard Internet browsers.

As an example of the work process we use an introduction to a physical phenomenon, the three states of water. The introduction combines text, speak and animation.



Animation workspace. Place objects via drag-and-drop and use the Object Specifier to precision work. Use the TimeLine editor to make objects appear or disappear, grow or shrink, and rotate.

**User interface** – to maintain a steep learning curve and ease of use NetOp® Reactor's user interface was designed to meet industry standards.

NetOp® Reactor not only supports your creative efforts, it also eases the process from creation to publication:

**SCORM** – NetOp® Reactor is such a content creation tool – a Courseware. NetOp® Reactor has built-in native SCORM 1.2 support to fully support the core sentiment of “interoperability, accessibility, reusability” and “durability”.

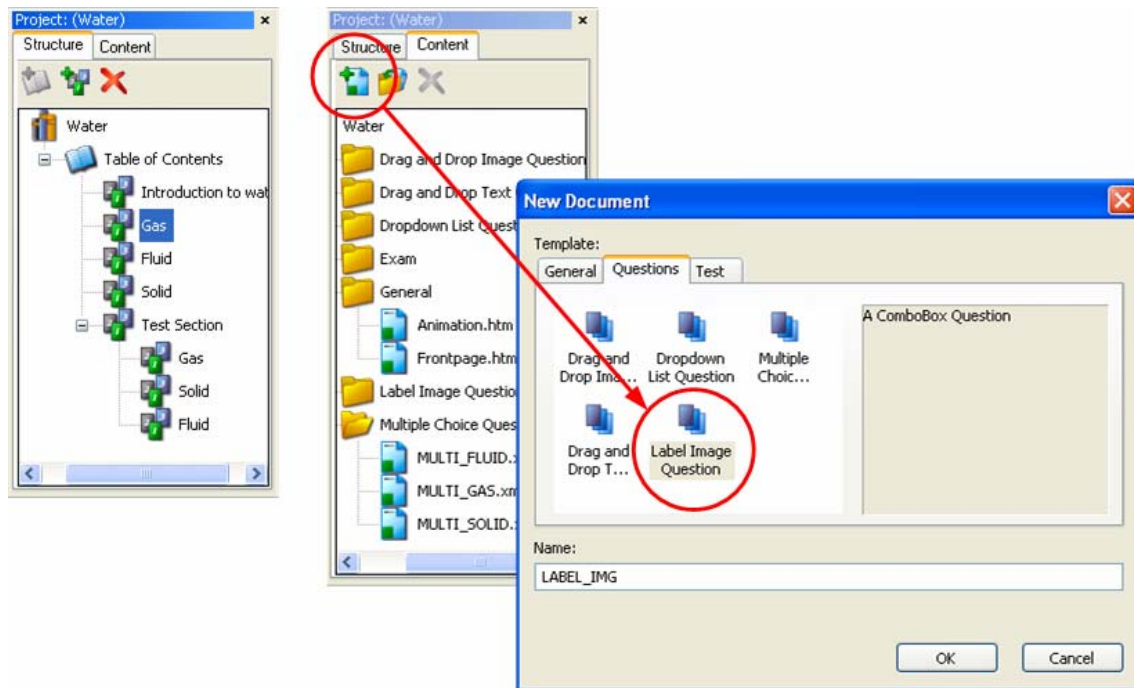
NetOp® and the red kite are registered trademarks of Danware Data A/S. All other products mentioned in this document are trademarks of their respective manufactures. Danware Data A/S denies any and all responsibility for damages caused directly or indirectly as a result of using this document. The content of this document is subject to change without notice.

# NetOp<sup>®</sup> Reactor



**Total control of animation** – NetOp<sup>®</sup> Reactor allows you to move and size any graphics via timelines. In addition to the control possibilities, all graphical components are translated into vectors. This means that you always maintain high-quality graphics that run smoothly in your presentations and that these graphics take up much less space than e.g. animated GIF graphics.

**Structured workflow** – NetOp<sup>®</sup> Reactor keeps you in control of your project. Create a table of contents and begin assigning pages to them. NetOp<sup>®</sup> Reactor offers a wide range of pre-made page types, giving you the opportunity to create on-line content that covers anything from text, movie clips, animations and a range of test types.



Create TOC entries and assign pages to project from the project pane. Click *New TOC Section*, name it and place it where you want in the Structure pane. Click the *New Document* button and select the page type you need.

A high degree of efficiency is achieved due to the versatility and ease-of-use that the software offers. The professional user can produce top quality products that less skilled users can easily maintain.

## Q & A

### *What is SCORM?*

SCORM is an acronym for Sharable Content Object Reference Model – the world's standard model for e-learning content set forth by the Advanced Distributed Learning, a joint US government and academia initiative.

*“The SCORM contains a collection of specifications adapted from global specification bodies and consortia to provide a comprehensive suite of e-learning capabilities enabling interoperability, accessibility and reusability of Web-based learning content”.*

Statement from the ADL website (adlnet.org)

Software vendors that wish to succeed in this part of the e-learning industry today must comply with the above demands.

NetOp<sup>®</sup> and the red kite are registered trademarks of Danware Data A/S. All other products mentioned in this document are trademarks of their respective manufactures. Danware Data A/S denies any and all responsibility for damages caused directly or indirectly as a result of using this document. The content of this document is subject to change without notice.

# NetOp<sup>®</sup> Reactor



*Does NetOp<sup>®</sup> Reactor offer animations?*

Yes, drag-and-drop images, gif's, jpg's into the workspace and start animating.

*How do you publish a project?*

There are two ways: Either save to a network drive or upload to an FTP server. A tool for this purpose is included in NetOp<sup>®</sup> Reactor.

*Apart from still images, which other elements can I use?*

NetOp<sup>®</sup> Reactor handles XML, multimedia (audio, image and video – see types in the documentation), ActiveX and script.

*If I have a presentation in PowerPoint – how do I reuse my work?*

Import the .ppt file to NetOp<sup>®</sup> Reactor and you're done.

## Who is Danware

Danware's core business is to develop and market software products based on the NetOp core technology – a technology enabling swift, secure and seamless transfer of screens, sound and data between two or more computers.

The company's three product areas are Desktop Management, Education and Security. The core Desktop Management product, NetOp Remote Control, enables remote control of one or more computers from another computer and can be used across different system platforms. NetOp School, the Education core product, is a software application for computer-based classroom teaching in both physical and virtual classrooms via the Internet or other networks. The Security business products are NetOp Desktop Firewall and NetOp Netfilter. All are plug 'n play products offering extensive functionality, flexibility and user-friendliness.

See more at: [www.netop.com/netop-809.htm](http://www.netop.com/netop-809.htm)